



Theydon Park Road, Epping, CM16

BUTLER & STAG



**Guide Price £725,000 - £750,000**  
**A detached family house,**  
**featuring three bedrooms and**  
**located in a prime position in the**  
**heart of this highly regarded**  
**village within easy walking**  
**distance of the Central Line tube**  
**station for easy access into the**  
**City, West End and beyond.**



## Freehold

- Detached Family Home
- Three Bedrooms
- Large Lounge/ Study Room
- Two Bathrooms
- Off Street Parking/Summer House
- Loft Room

The property offers well-proportioned accommodation arranged over two floors including inviting entrance hall, a study/play room, a large living room, modern kitchen/dining area, downstairs shower room.

The first floor provides three bedrooms, a family bathroom. The second floor has a good size loft room with ample storage.

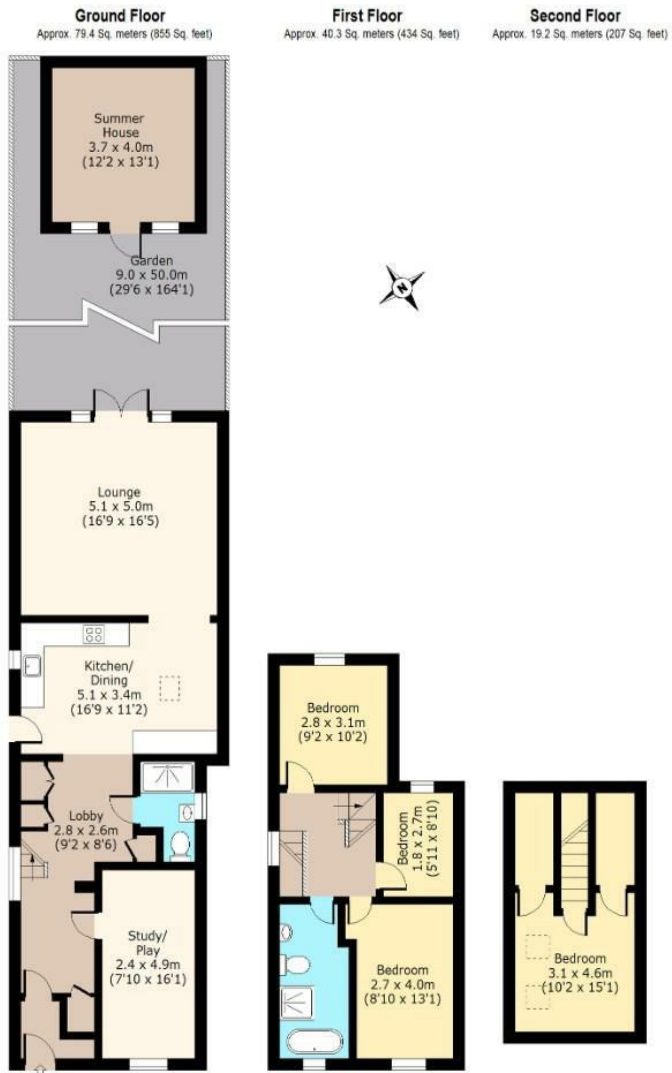
Externally, there is a substantial rear garden extending beyond 100' with patio and lawn. To the front, off street parking for two/three vehicles.

Theydon Park Road is a much sought after road in the ever popular village of Theydon Bois. The village is arranged around the green, complete with duck pond, and offers a parade of shops, several pubs and restaurants and easy access into Epping Forest. Transport links into London are excellent and there are several well regarded state and private schools within easy reach. Local leisure facilities include golf courses, sports centres and a tennis club.





**Theydon park Road,**



Total area: approx. 138.9 Sq. meters (1496 Sq. feet)

Total area: approx. 153.7 Sq. meters (1655 Sq. feet)  
(Including Summer House)

For illustration purposes only - not to scale  
[www.lpaplus.com](http://www.lpaplus.com)



**BUTLER & STAG**

☎ 01992 667666

🏠 4 Forest Drive, Theydon Bois, Essex, CM16 7EY

✉ [theydon@butlerandstag.com](mailto:theydon@butlerandstag.com)

[www.butlerandstag.uk](http://www.butlerandstag.uk)

IMPORTANT NOTICE - These particulars have been prepared in good faith and they are not intended to constitute part of an offer or contract. We have not performed a structural survey on this property and the services, appliances and specific fittings have not been tested. All photographs, measurements, floor plans and distances referred to are given as a guide and should not be relied upon.